

DISTRICT HEALTH PROFILE NEELUM

DISTRICT AT A GLANCE	
Area	3621
Projection Population 2013	191,000
Urban	
Male	4910
Female	3750
Rural	
Male	93967
Female	87601
Projection Population 1998	126,000
Administrative Setup	
Total Villages	88
No. of Village in Sharda	25
No. of Village in Athmuqam	63
Union Councils	09
Sub-Divisions	02

Source: <http://pndajk.gov.pk/Documents/AJK%20at%20a%20glance%202013%20final.pdf>

NUMBER OF HOSPITALS					
Main Hospitals		RHCs		BHUs/ Dispensaries	
NO.	BEDs	NO.	BEDs	NO.	BEDs
2	130	1	-	12	20
				40	

Source: <http://pndajk.gov.pk/Documents/AJK%20at%20a%20glance%202013%20final.pdf>

NUMBER OF DOCTORS/ NURSES					
Male	Female	Total	Male	Female	Total
22	4	26	-	22	22

Source: <http://pndajk.gov.pk/Documents/AJK%20at%20a%20glance%202013%20final.pdf>

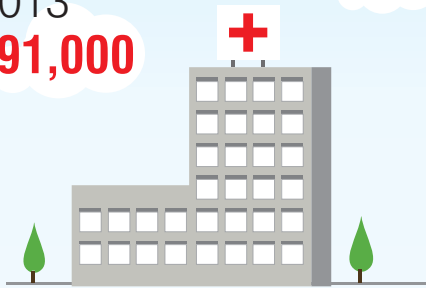
POPULATION GROWTH					
Population groups	Standard demographic (%)	Estimated population	Population groups	Standard demographic (%)	Estimated population
Under 1 year	2.70	4,756	Women 15-49 years	22.00	38,752
Under 5 years	13.40	23,603	Married women of Child Bearing Age (CBAs)	16.00	28,183
Under 15 years	41.97	73,928	Pregnant women	3.40	5,989
Expected births	2.90	5,108			

Source: <http://pndajk.gov.pk/Documents/AJK%20at%20a%20glance%202013%20final.pdf>

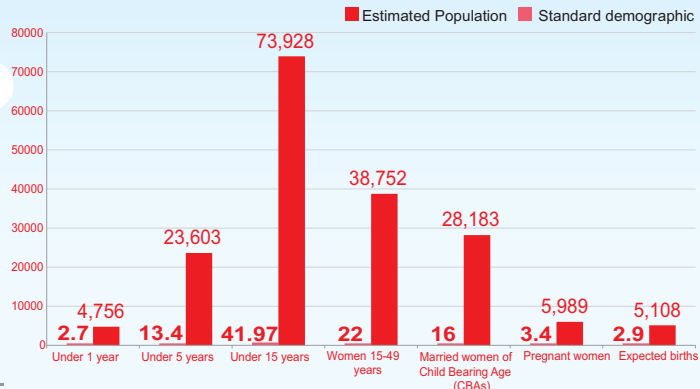
Health Infographic - District Neelum

Area **3,621**

Projection Population 2013
191,000



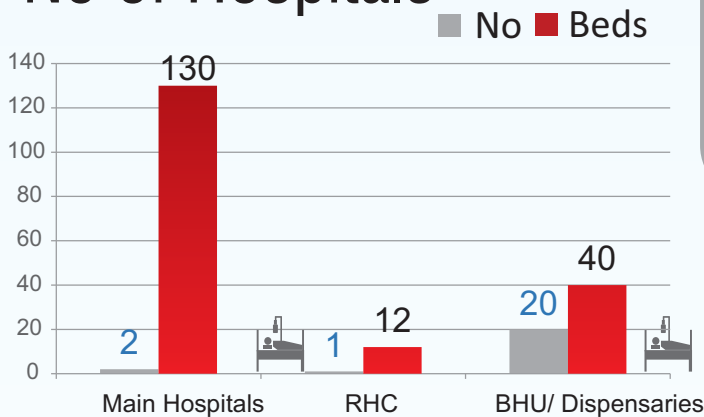
Population Growth Rate



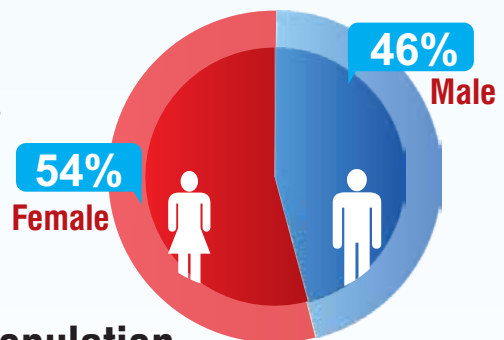
Administrative Setup

Total Villages	88
No. of Village in Sharda	25
No. of Village in Athmuqam	63
Union Councils	09
Sub-Divisions	02

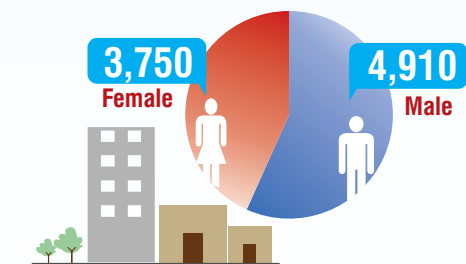
No of Hospitals



No of Doctors/ Nurses



Urban Population



Rural Population

